

# The 2026 Legislative Session at One Granite Place

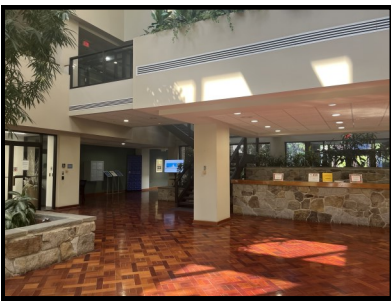
The Legislative Office Building will not be open for the 2025-2026 Legislative Session and is expected to stay closed until at least 2027. House meetings and hearings will be held at One Granite Place (right), the headquarters for the state's Judicial Branch, which is more than a mile away from the State House.



View of One Granite Place from visitor's lot

This will undoubtedly make the upcoming legislative session more complicated with testifiers not only having to find and get used to the temporary location for hearings, but also adding the difficulty of navigating between the State House and One Granite Place for Senate and House hearings.

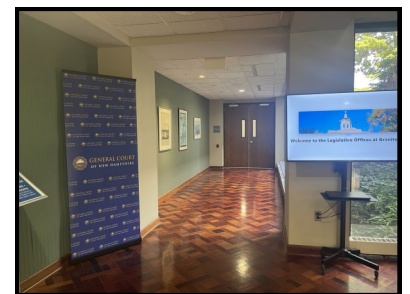
## Instructions for Entrance



Atrium of One Granite Place

Once you turn onto Granite Place, follow the main drive, go toward the South Building (take left at the fork) to a parking area in front of the building. Enter the building through the main entrance located under a long concrete awning.

As you enter the building you will find yourself in a large lobby (above). There is no need to stop at the reception desk on the first floor. Go through the double doors at the left and you will be at the hallway to the House Meeting rooms (right). If you need to get to the 2nd floor, you can proceed through the Department of Justice entrance (first glass door on your right as you enter the large lobby). From there you can either turn left to go to the bathrooms or turn right to enter an elevator. There will be staff present at all times if you have any questions, comments, or concerns while you are there.



Hallway to House meeting rooms

If you have any questions or concerns about testifying at One Granite Place, feel free to contact DD Council Policy and Planning Coordinator, Chase Eagleson, at [Chase.G.Eagleson@DDC.NH.Gov](mailto:Chase.G.Eagleson@DDC.NH.Gov)

# **Directions to One Granite Place**

## **If you are coming from the north:**

- Follow I-93 S to US-202 W in Concord
- Take Exit 15W
- Continue on 202 W
- Slight Right onto Bouton Street
- Continue onto N State Street
- Turn Left onto Penacook Street
- Turn Right onto Rumford Street
- Turn Left onto Granite Place
- Follow sign that says South Building (to the left). Bear right and visitor parking spaces are available on your left.

## **If you are coming from the south:**

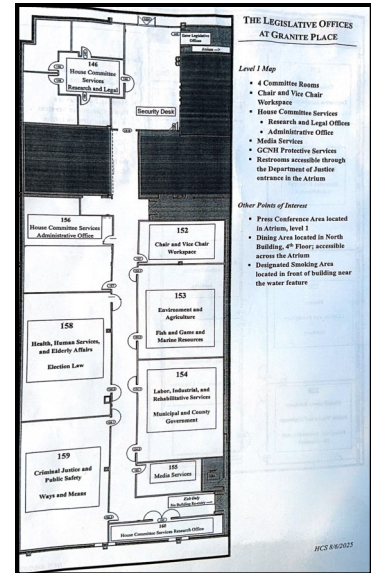
- Follow I-93 N
- Take Exit 15 W
- Continue onto US-202 W
- Slight Right onto Bouton Street
- Continue onto N State Street
- Turn Left onto Penacook Street
- Turn Right onto Rumford Street
- Turn Left onto Granite Place
- Follow sign that says South Building (to the left). Bear right and visitor parking spaces are available on your left.

# Layout of One Granite Place

House meetings and hearings held at One Granite Place will take place on either the first or second floor of the facility.

The first floor will host the following House Committees in the labeled rooms:

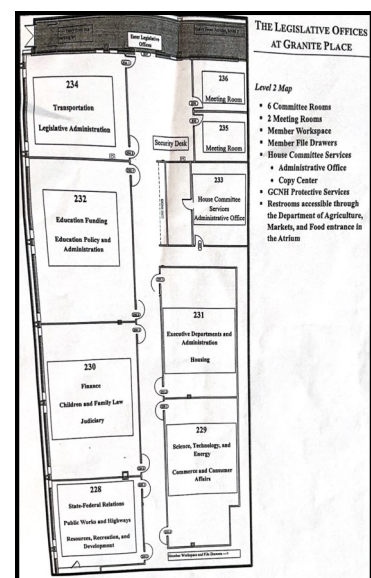
- Room 153
  - Environment and Agriculture
  - Fish and Game and Marine Resources
- Room 154
  - Labor, Industrial, and Rehabilitative Services
  - Municipal and County Government
- Room 158
  - Health, Human Services, and Elderly Affairs
  - Election Law
- Room 159
  - Criminal Justice and Public Safety
  - Ways and Means



Layout of floor 1

The second floor will host the following House Committees in the labeled rooms:

- Room 228
  - Public Works and Highways
  - Resources, Recreation, and Development
  - State-Federal Relations
- Room 229
  - Commerce and Consumer Affairs
  - Science, Technology, and Energy
- Room 230
  - Children and Family Law
  - Finance
  - Judiciary
- Room 231
  - Executive Departments and Agriculture
  - Housing
- Room 232
  - Education Funding
  - Education Policy and Administration
- Room 234
  - Legislative Administration
  - Transportation



Layout of floor 2